

# Custom Speaker Pods

## '04 – up Club Car Precedent 5 1/4" Glove Box Pod Installation

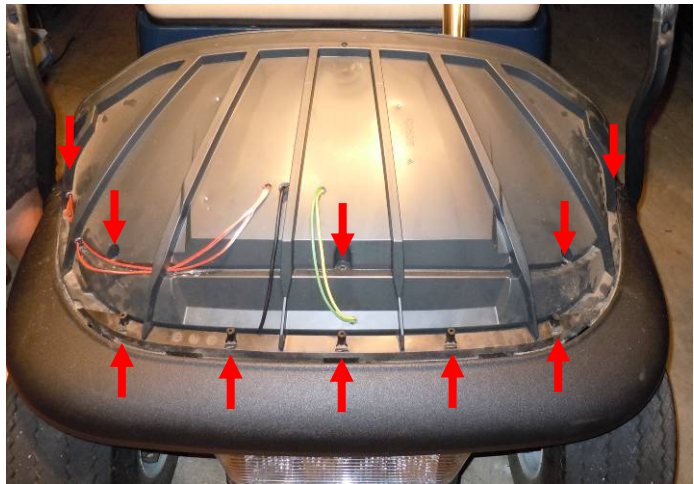
1. Remove the dash trim piece by removing the four screws as seen here.



2. Pull of the hood shroud.



3. There will be 10 screws that need to be removed before the hood panel can be pulled off. 5 screws will be removed from beneath the front bumper. 5 screws will be removed from above. Refer to the image to the right for the screw locations.



4. With all of the screws removed you can now pull the hood panel completely off the cart. The panel sort of clips in on the front edge, so it may take a little force to get it removed.



5. The center glove box tray will have to be removed to make room for the drivers side speaker pod. Conveniently, there is a deeper well located just underneath this tray for additional storage.



6. Put the speaker pod in place and predrill the pilot holes for mounting purposes. It also doesn't hurt to place your speaker within the pod to make sure it fits properly.



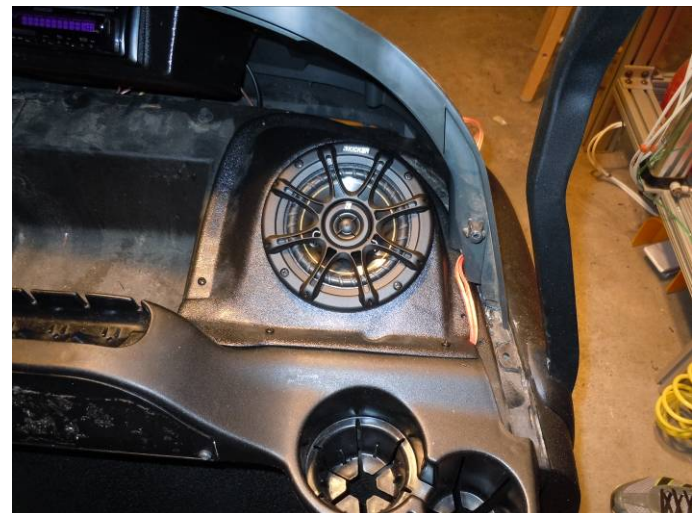
7. Predrill holes through the speaker pod and into the dash tray on the passenger side as well.



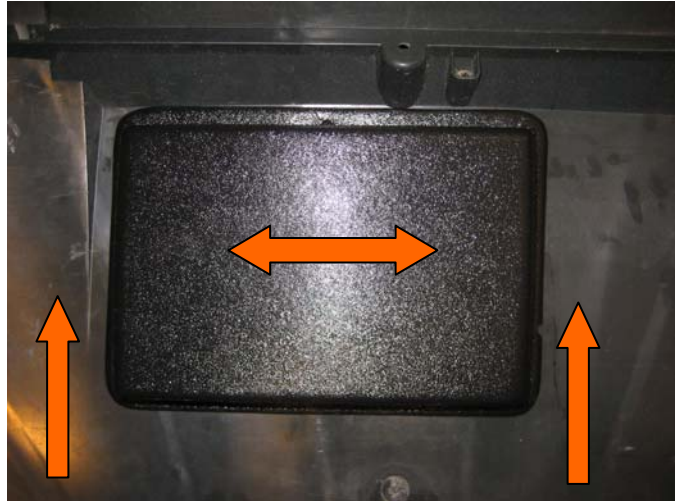
8. Attach the speaker pod to the golf cart using the supplied hardware.



9. Attachment using a rivet gun comes highly recommended. If you do not have a rivet gun, the hardware provided will suffice.



10. If you ordered the radio mount, then install by flipping the hood panel over so that the top side is facing down. Position the radio mount towards the front of the hood panel as seen here. The radio mount is contoured to fit the lumps and bumps of the underside of the hood, so slide it from side to side until it fits just right. Use the provided screws to attach the radio mount. Don't worry about going through the other side of the hood, the hood shroud will cover up any unsightly screw ends.



11. Installation of your speaker pods are complete. Reassemble the cart in the same order you had taken it apart.

